



PROJECT GUIDE



 530 476
477 500
681 633
706 553  **FP4**.CO.NZ
FUTURE-PROOF BUILDING

In a world of ever changing values, there are still some things upon which you can rely. One of these is that Resene Construction Systems will continue to strive to produce the most innovative, performance based coatings, and facade systems that it possibly can, whilst maintaining environmental awareness, benchmarked against the New Zealand building code, and international standards.

A privately owned and operated New Zealand business established as ROCKCOTE in New Zealand in 1987 - Resene Construction Systems now incorporates the ROCKCOTE & Plaster Systems businesses, specialising in the local design, manufacture and distribution of an extensive range of premium plaster facade systems, and coatings solutions.

The construction process contains many facets which when combined, and applied accurately make for a shining, and durable example of the construction process, from Design and Architecture, through to the selection of products, and the trades people that apply their skills to the installation of these components.

At Resene Construction Systems we only promote best products, solutions and practice for each and every solution we provide. With this in mind, we have created this guide to assist you through the construction process.

Please read this guide and keep it as a handy reference tool as you progress through your project.

If you have any questions relating to Resene Construction Systems products, or systems, feel free to contact us direct by free calling 0800 50 70 40.



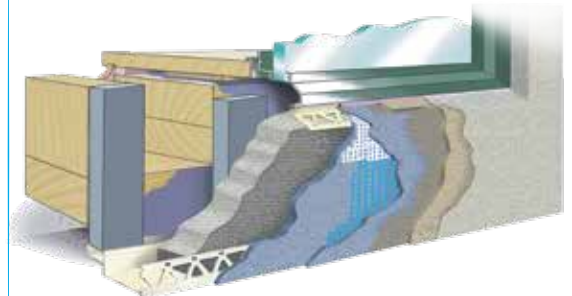
System Selection

Resene Construction Systems have developed comprehensive, hand applied, plaster facade solutions for New Zealand.

All Resene Construction systems plaster façades are supplied and installed by registered, qualified plasterers who are fully conversant with the systems they are installing.

Each Resene Construction System has different requirements in terms of application and installation from our complete supply & installed cavity based façade systems through to rendering solutions over brick or masonry substrates. Our solutions include supply & installation right through to the finished texture style, colour, and backed up by a range of products and services that will enhance the system for the life of the building.

Our local representatives, or your Designer will be able to assist you with the process of system selection based on your individual requirements.





Specification

The specifications of your project are critical, as they provide clear guidance as to what is required by the individual trades people who work on the project. Our Performance Guarantee offered is totally dependent on the correct specifications and instructions being followed.

Your architect or designer, in conjunction with the manufacturer/system supplier, specify the components required to construct your project.

Our representatives will work closely with you and your Architect or Designer to achieve a solution for your project.

Your local BCA (Building Consent Authority) will issue a building consent based on the specifications supplied by your architect, or designer.

The specifications must comply with/or meet the requirements of the New Zealand Building Code under the relevant section.

If you wish to change any part of your project specification, the BCA must be informed of the proposed changes as it may require a revision of the original building consent to ensure the proposed changes comply with the current New Zealand Building Code.

During construction, our exterior plaster facade systems must be constructed and installed as per the selected Resene Construction Systems, architect or designers instructions. This includes connections by other trades who are working on the project, such as roofers, plumbers, electricians etc.

Buildings may be designed and built to parameters other than those contained in the NZBC, provided they still meet the requirements of the Building Code. Such building designs are termed Alternative Solutions. They can only be used when the territorial authority is satisfied, on reasonable grounds, that the building would comply with the Building Code if the work is completed in accordance with this design.





OnSite

We provide our exclusive OnSite Assistance to each and every project nationally. This provides surety of system/product installation at the time of visiting your project.

The Resene Construction Systems Performance Guarantee requires that all pre-determined OnSite assistance of your project is completed accurately.

Our OnSite assistance is based on standard Resene Construction Systems specifications.

If the Resene Construction Systems representative or your registered Resene Construction Systems plasterers deem any portion of the system installation faulty at the time of assessment, or notices sub-trade installations that could impact on the integrity of the specified system, the main contractor will be notified of these defects which will need to be resolved.

Final warranty issue will be withheld until such time as the system installation complies to specification.

Your registered plasterer(s) will undertake the specified plaster works in accordance with Resene Construction Systems specifications at all times and on completion will provide their completed warranty, and Licensed Building Practitioner documentation.

Quoting

To assist you in selecting one of our Qualified LBP registered plasterers, contact us directly on 0800 50 70 40, or view our contacts section on our website.

The sales and technical team at Resene Construction Systems will be able to assist you on who is available and best suited to provide a quote based on your construction schedule, and project size.

Alternatively, you may contact a registered Resene Construction Systems plasterer direct. Visit our website to find a plasterer in your area.

Your project will be quoted by your selected registered plasterer according to Resene Construction Systems specifications provided. When you decide to proceed with their quote, you will need to sign the acceptance section of the quotation and return to your registered plasterer for confirmation and scheduling of your project.

Resene Construction systems are the manufacturer and designer of the selected system for installation.

The selected Resene Construction Systems can only be supplied and installed by LBP qualified & registered plasterers.

All registered Resene Construction Systems plasterers are PPCS (Proprietary Plaster Cladding Standards) LBP registered.





Colour Selection

Texture Style

The Resene Construction Systems range of textures is wide and varied and are comprised of organic, pre-coloured and natural mineral based finishes, all applied by hand.

Our pre-coloured texture finishes are organic, 100% acrylic and can be tinted to your selected colour, these textures are overcoated with 'Environmental Choice' accredited Rockcote Armour, Resene X200 or Aquashield which assists in providing an easy to maintain surface.

If you select one of our natural 'mineral' texture finishes, these are applied grey (uncoloured) and are painted in your selected colour using the Rockcote Armour, Resene X200 or Aquashield. Texture finishes such as EzyTex, Santa Fe Adobe, Traditionale Sponge, or Fast Float - Tasman & Fine Sponge are only available as mineral texture finishes.

We have many texture styles to choose from, it is important that the texture you choose compliments your design and personal tastes. We have sample boxes available of our entire texture range which will assist you in the look and feel of the finishes available.

Check your quote to see what texture style was quoted for. In most cases Rockcote 'Classico' Pre-coloured texture, or Fast Float Tasman or Ezytex mineral texture finishes are allowed for as they are the most popular. If you desire a texture style such as, 'Casamenti', or 'Santa Fe Adobe' which are classed as heavy finishes and will require more product and a higher labour content, please advise your plasterer.

As a Resene Group company, colour selection is as easy as going to your nearest Resene ColorShop to choose your colours.

Colour selection is an important component as it not only enhances your design, it also assists in the on-going durability of the final coatings.

Once you have selected your colour(s) advise your plasterer who in turn will advise Resene Construction Systems. If requested we can supply samples of your selected colour and texture style for your approval.

If you select a dark colour we require the application of our exclusive Cool levelling plaster, in conjunction with the Resene CoolColour paint system to complete this premium solution. You must advise your contractor prior to starting works that you are wishing to choose a dark colour as this technology is exclusive and advanced ordering of products may apply.

It is important to recognise that dark colours or colours with a reflectance value (RV) less than 25% can impact on the performance of the system.

Each colour's RV (reflective value) can be found on the Resene's colour chart, or alternatively simply ask a Resene Construction Systems representative.



The Resene Construction Systems Performance Guarantee - protecting your investment

The Resene Construction Systems Performance Guarantee process starts once you accept your registered plasterers quote. It provides you with the assurance that your Resene Construction Systems façade is backed up by one of New Zealand's largest privately owned companies - Resene Paints Ltd.

The Resene Construction Systems Performance Guarantee is a complete process that includes our exclusive OnSite assistance, and documentation that helps to ensure your Resene Construction Systems façade meets or exceeds the requirements of the New Zealand Building Code.

When you accept your quote, we will be advised by your plasterer of your project. Your project will be given a unique Resene Construction Systems project code, which will identify your project throughout the installation and warranty process.

The following documentation needs to be completed to the satisfaction of Resene Construction Systems to ensure compliance with the specified Resene Construction Systems façade;
Pre-construction code information: supplied by your registered plasterer to Resene Construction Systems on quote acceptance.

It is the responsibility of your registered plasterer to complete the specified works in accordance with the specifications, and notify us when they are ready for our OnSite Assistance.

***2 Resene Construction Systems OnSite Assistance:**
When all OnSite Assistance information is completed, and returned to us, we issue our warranty pack to your registered plasterer. On completion of your contract you will receive this valuable information, which should be kept with other important construction records. In particular, your registered plasterer LBP façade producer statement, and memorandum of work which your local territorial authority requires as part of their Code of Compliance process.

Your Resene Construction Systems Warranty Package includes ;

- Resene Construction Systems Performance Guarantee
- Resene Construction Systems Registered Plasterer Workmanship Warranty
- Resene Construction Systems Registered Plasterer Producer Statement
- LBP memorandum of work
- My Home Maintenance Guide
- 2 year project review

The LBP memorandum of work, and the Resene Construction Systems Performance Guarantee will be enclosed for you to pass onto your local BCA inspector for their records.

The Resene Construction Systems Performance Guarantee covers all Resene Construction Systems products as per the approved specification that have been installed to your project *6. If any product supplied by Resene Construction Systems to your project fails to perform as intended, Resene Construction Systems will undertake to replace and rectify the affected Resene Construction Systems products within *6 10 weeks of notification.

Being pro-active is the key to maintaining your Resene Construction Systems exterior. To assist in this process Resene Construction Systems will undertake to complete an OnSite review two years after your project has been completed.

The review will be carried out by a Resene Construction Systems Project representative, who will check over the entire Resene Construction Systems façade.

Some of the things they will be looking for, include adequate ground clearances, signs of settling or movement, exterior fixture installation, scupper outlets from decks or roofs, adequate sealing of penetrations through the cladding etc.

Resene Construction Systems will provide a letter on their findings. A copy will be forwarded to you and we will hold a copy for our reference.

We will contact you in advance requesting a suitable time to carry out this review.

This guarantee is valid for the specified term of the selected Resene Construction System*5 and is a Guarantee for the system applied to the project, in turn it stays with the property.





Notations

*1 The stability of the selected Resene Construction System can be affected by excessive heat and the primary source of heat is from exposure to the sun.

The simplest guide to the amount of heat the surface will absorb from the sun is the colour of the finishing coats.

If you select a colour that has a RV (reflectance value) less than 25%, we require the application of our exclusive Cool levelling render and subsequent Resene CoolColour finishing coats be applied. Failure for this to be achieved may result in us declining our performance guarantee, or alternatively a requirement that a waiver form is completed.

The Resene Construction Systems 25% RV is an Alternative Solution to the Building Code and as such, requires council consent. Proof of the Resene Construction Systems CoolColour specification or disclaimer form may be required by the local Council prior to final code of compliance being issued.

*2 Onsite assistance is carried out by Resene Construction Systems representatives. These representatives are qualified to assess the standards of workmanship as required and outlined in standard Resene Construction Systems specifications. If, at the time of our OnSite assistance, the Resene Construction Systems representatives deem other sub-trade installations to be non compliant, which could impact on the integrity of the Resene Construction Systems façade, a verbal or written notification of the issue at the time of inspection will be made to the main contractor for rectification. Notice of the issue will be made on the Resene Construction Systems site report. It is the sub-trades sole responsibility to ensure that their works comply with their LBP & National Building Code requirements.

*3 All points listed, including the Resene Construction Systems Maintenance Guide, are required to comply with the general requirements of the Resene Construction Systems Performance Guarantee.

Resene Construction Systems provides information to the best of their ability. Changes to the NZBC (New Zealand Building Code) or technological advances

outside the control of Resene Construction Systems can, and may be used from time to time, if Resene Construction systems deem these changes acceptable to the installed Resene Construction Systems.

It must be noted that due to natural weathering of the surface, repaired areas may not perfectly match the surrounding area.

Surface defects such as minor hairline cracking are rare with our systems and technology, however if they occur they are generally deemed acceptable and easily remedied. No supplier will guarantee a crack free surface for the life of the product without exclusions. Post construction movement from mechanical forces that are not attributable to the cladding, such as; sub-trade installations, initial settling of the building, or thermal stress. Resene Construction Systems specify vertical & horizontal control joints at locations deemed to be at risk which allow for substrate movement, in turn minimising if not eliminating this type of defect occurring.

*4 Resene Construction Systems performance guarantee time frames vary, dependant on the particular system installed. Refer to systems specifications and warranty documents for warranty periods

*5 Product failure due to events outside the control of Resene Construction Systems are not covered by this Guarantee. These can include but are not limited to accidental or intentional impact, acts of God, chemical abrasion, post cladding installations by others and sub-trade installations.

*6 10 weeks indicates the minimum time frame allowable to rectify a faulty Resene Construction Systems supplied product. Factors outside the control of Resene Construction Systems may affect this time frame.

Due to our policy of continuing product advancement, Resene Construction Systems reserves the right to change these specifications without further notice.

Resene Construction Systems Performance Guarantee effective from 1st February 2005



ROCKCOTE

Premium plaster facade systems, pre-coloured, flexible acrylic, and mineral coatings for interior and exterior use.



Plastering, textures and coating systems for interior and exterior.

NTEGRA

LIGHTWEIGHT CONCRETE S

Premium AAC lightweight concrete façade, flooring, and fencing systems. Providing impact, and acoustic resistance with the durability of lightweight concrete.

graphex.

A graphite infused insulation panel specially designed to significantly improve the external insulation of your project.

Seismolock GRC

Reinforced plaster strengthening system offering an economical alternative to traditional post construction earthquake strengthening methods.

EARTHEN

NATURAL CLAY PLASTER

Natural Clay plaster finishes applied by hand to create beautiful interior environment.

Milano

Interior finishes

Fine lime render, coloured with natural earth fillers, and fine marble powders. Traditionally used internally and externally, providing a polished, smooth to touch surface.

MULTI STOP

PATCH, REPAIR & FINISH

A range of patching, repairing and finishing plasters for masonry substrates.

multiplast®

Fibre cement sheet jointing system, and repair plaster.

villastop®

Stopping and Finishing Compound

Fine, sandable finishing plaster for use over cement sheet and other masonry substrates.

ezyplast

Interior Hardwall Plaster

Gypsum-based interior hardwall plaster hand applied over concrete blocks, masonry, bricks, metal lathe or plaster board.

Resene 
Construction Systems
www.reseneconstruction.co.nz

0800 50 70 40